

132

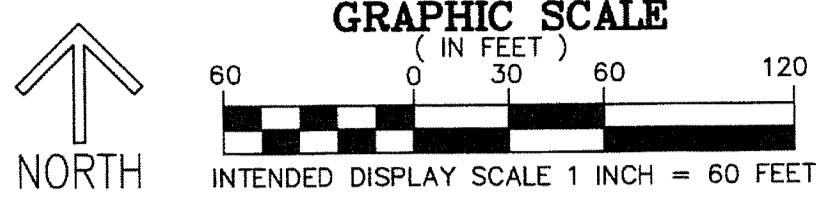
STATE OF FLORIDA
COUNTY OF PALM BEACH
THIS PLAT WAS FILED FOR
RECORD AT _____ M.
THIS _____ DAY OF _____
A.D. 2015 AND DULY RECORDED
IN PLAT BOOK _____ ON
PAGES _____ AND _____
SHARON R. BOCK
CLERK AND COMPTROLLER

BY: _____
DEPUTY CLERK

SHEET 3 OF 5

THIS INSTRUMENT PREPARED BY
DAVID P. LINDLEY
OF
CAULFIELD and WHEELER, INC.
SURVEYORS - ENGINEERS - PLANNERS
7900 GLADES ROAD, SUITE 100
BOCA RATON, FLORIDA 33434 - (561)392-1991
CERTIFICATE OF AUTHORIZATION NO. LB 3591
APRIL - 2015

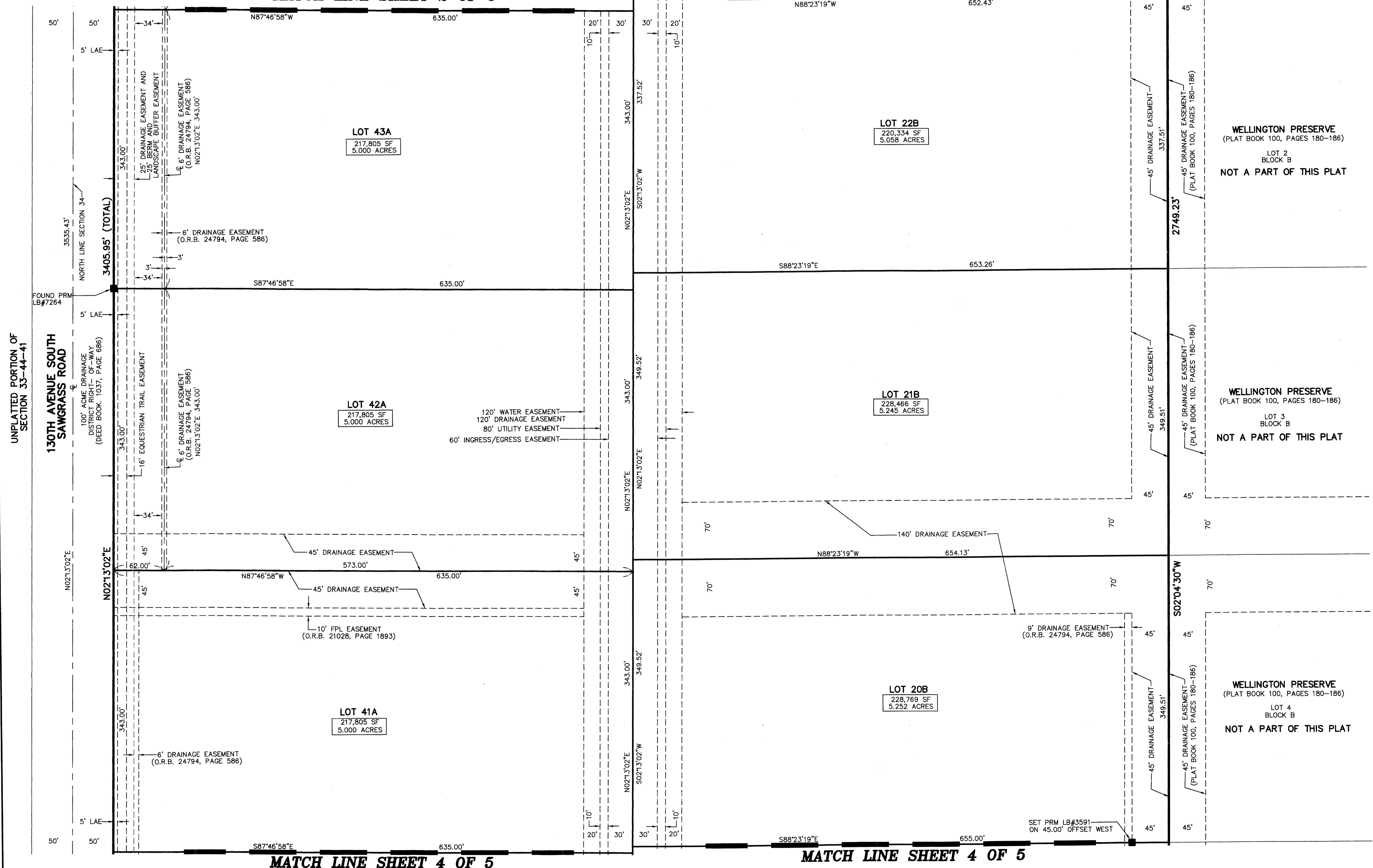
A PORTION OF THE ORANGE POINT P.U.D.
ZACARA FARM
BEING A REPLAT OF LOTS 37 THROUGH 48, INCLUSIVE, BLOCK A AND LOTS 16 THROUGH 24, INCLUSIVE, BLOCK B, WELLINGTON PRESERVE, ACCORDING TO THE PLAT THEREOF,
AS RECORDED IN PLAT BOOK 100 PAGES 180 THROUGH 186, INCLUSIVE, OF THE PUBLIC RECORDS OF PALM BEACH COUNTY, FLORIDA,
LYING IN SECTION 34, TOWNSHIP 44 SOUTH, RANGE 41 EAST, VILLAGE OF WELLINGTON, PALM BEACH COUNTY, FLORIDA.



LEGEND OF ABBREVIATIONS
Δ - DELTA (CENTRAL ANGLE)
FPL - FLORIDA POWER & LIGHT CO.
L - ARC LENGTH
LB - LICENSED BUSINESS
O.R.B. - OFFICIAL RECORD BOOK
R - RADIUS
■ SET PRM - SET 4" X 4" X 24" PERMANENT REFERENCE MONUMENT
● PCP - PERMANENT CONTROL POINT

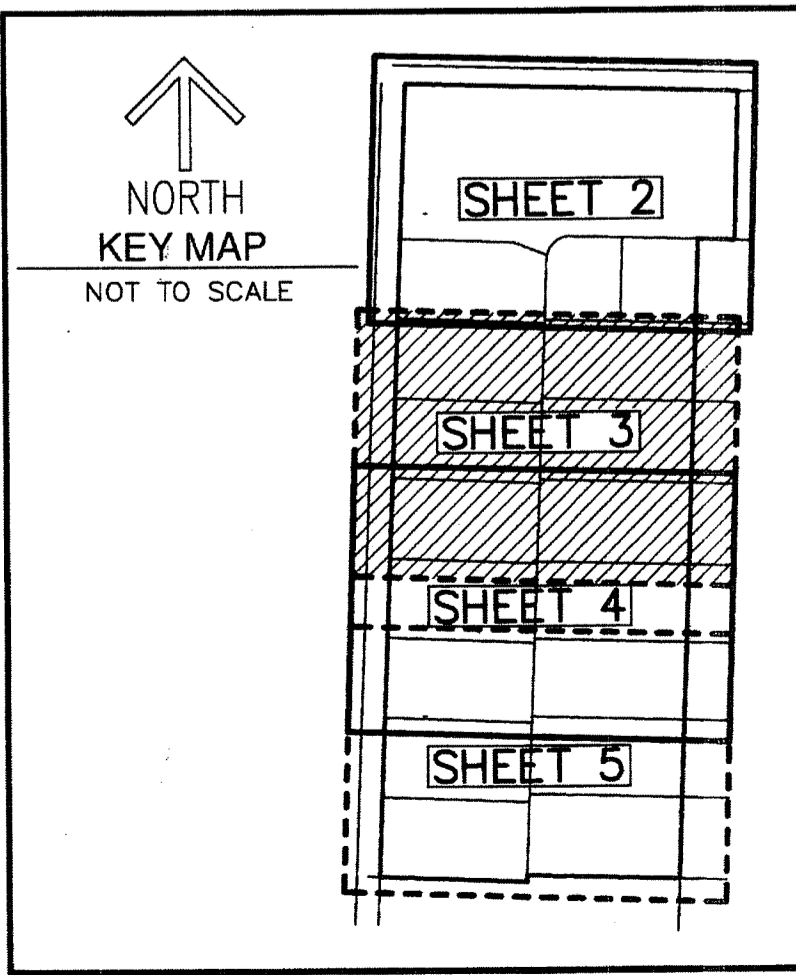
MATCH LINE SHEET 2 OF 5

MATCH LINE SHEET 2 OF 5



MATCH LINE SHEET 4 OF 5

MATCH LINE SHEET 4 OF 5



UNPLATTED PORTION OF SECTION 33-44-41

130TH AVENUE SOUTH SAWGRASS ROAD

FOUND PRM LB#7264

SET PRM LB#3591 ON 45.00' OFFSET WEST

WELLINGTON PRESERVE (PLAT BOOK 100, PAGES 180-186)

WELLINGTON PRESERVE (PLAT BOOK 100, PAGES 180-186)

WELLINGTON PRESERVE (PLAT BOOK 100, PAGES 180-186)

WELLINGTON PRESERVE (PLAT BOOK 100, PAGES 180-186)